



MOVE INN ESTATES
MAKING THE RIGHT MOVE



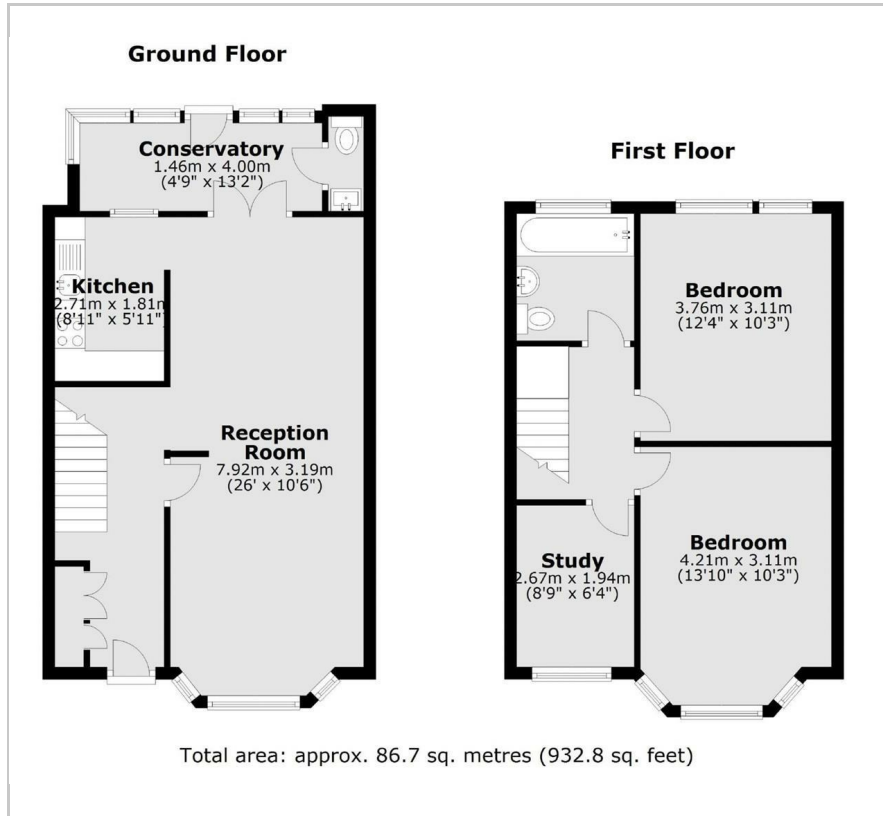
St. Leonards Gardens

, Heston, TW5 9DH

Price Guide £550,000



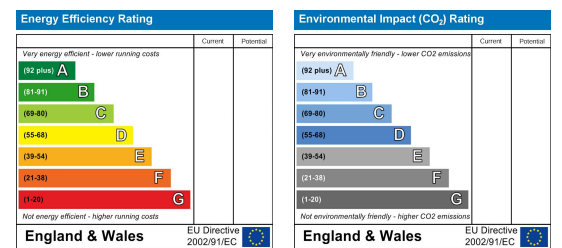
Floor Plan



Area Map



Energy Efficiency Graph



Viewing

Please contact our Move Inn Estates - Sales Office on 0208 574 4966 if you wish to arrange a viewing appointment for this property or require further information.



New to the market with Move Inn Estates, we present this contemporary 1930s family home, set in this convenient cul de sac in the heart of Heston.

The reception hallway leads you through to a good sized dual reception room which is well presented with wood flooring and nice decoration. This is open plan to the well fitted modern kitchen. There is also a useful conservatory with a guest wc.

Upstairs there are two double bedrooms, a single bedroom/study and a well fitted bathroom. Many neighbouring houses have been extended into the loft and to the rear.

Benefits from a large rear garden which is over 80 ft where there is a useful outhouse. Benefits from an 80ft garden, off street parking and scope to extend (STPP).

Located within a half of a mile of Hounslow West Station and close to numerous local schools. Early viewing recommended.



These particulars, whilst believed to be accurate are set out as a general outline only for guidance and do not constitute any part of an offer or contract. Intending purchasers should not rely on them as statements of representation of fact, but must satisfy themselves by inspection or otherwise as to their accuracy. No person in this firm's employment has the authority to make or give any representation or warranty in respect of the property.